

GATES OF
PARADISE
ANNE MIDDLETON





Plegadis falcinellus - Herald of the Flood, and Healer of the Sacred Eye, 2016
oil on linen, 192 x 252 cm

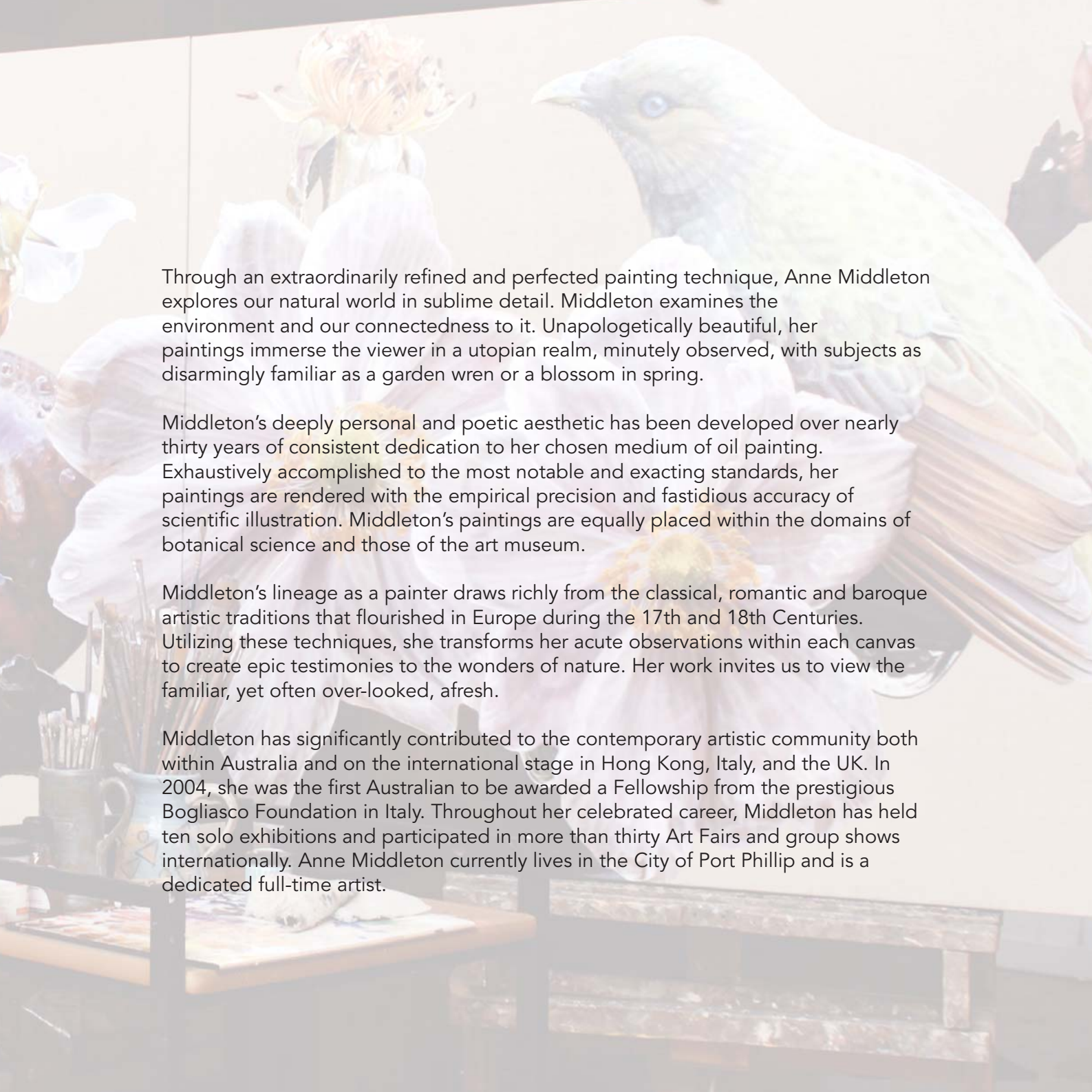
GATES OF PARADISE

ANNE MIDDLETON

29 March – 19 April 2017

The Gallery
St Kilda Town Hall



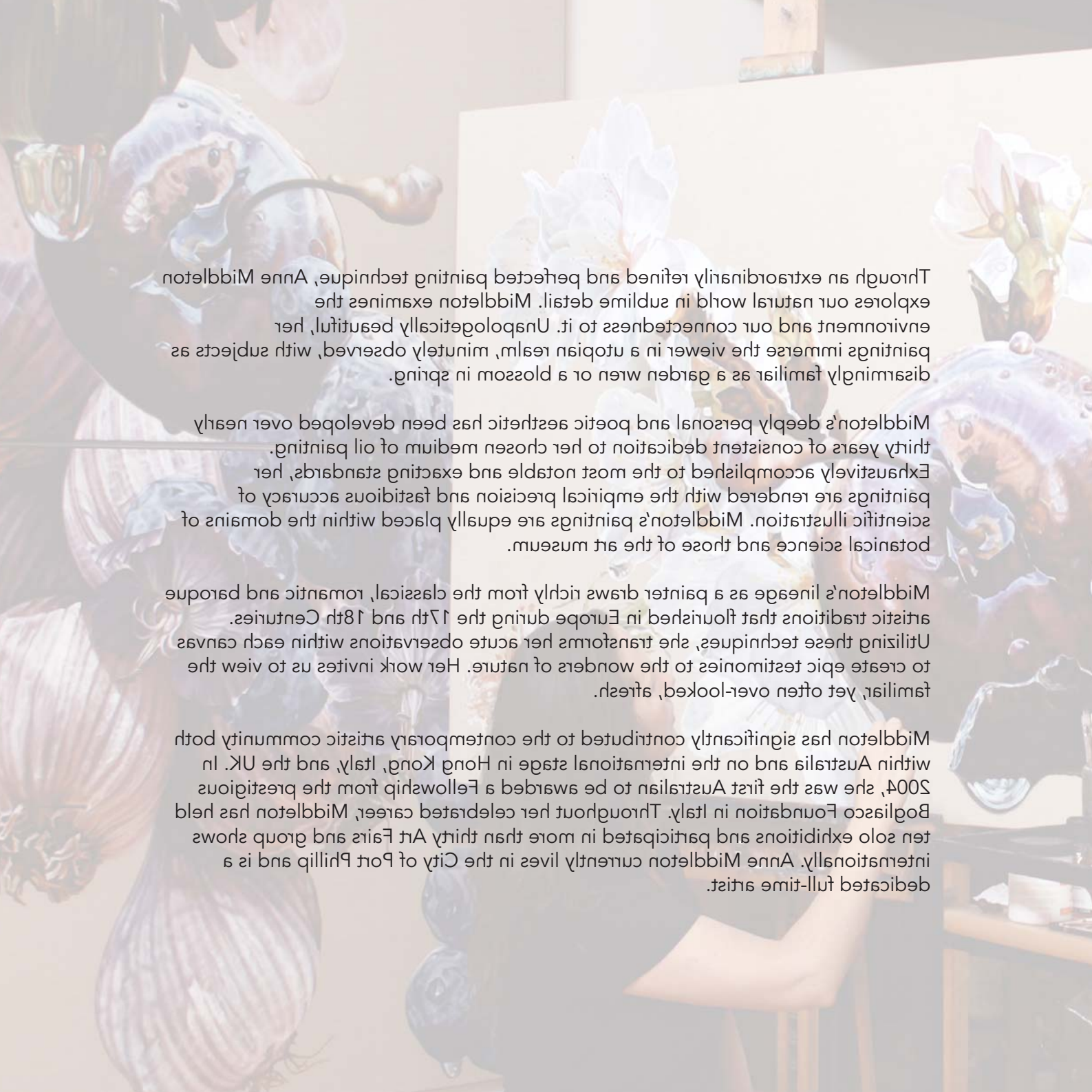


Through an extraordinarily refined and perfected painting technique, Anne Middleton explores our natural world in sublime detail. Middleton examines the environment and our connectedness to it. Unapologetically beautiful, her paintings immerse the viewer in a utopian realm, minutely observed, with subjects as disarmingly familiar as a garden wren or a blossom in spring.

Middleton's deeply personal and poetic aesthetic has been developed over nearly thirty years of consistent dedication to her chosen medium of oil painting. Exhaustively accomplished to the most notable and exacting standards, her paintings are rendered with the empirical precision and fastidious accuracy of scientific illustration. Middleton's paintings are equally placed within the domains of botanical science and those of the art museum.

Middleton's lineage as a painter draws richly from the classical, romantic and baroque artistic traditions that flourished in Europe during the 17th and 18th Centuries. Utilizing these techniques, she transforms her acute observations within each canvas to create epic testimonies to the wonders of nature. Her work invites us to view the familiar, yet often over-looked, afresh.

Middleton has significantly contributed to the contemporary artistic community both within Australia and on the international stage in Hong Kong, Italy, and the UK. In 2004, she was the first Australian to be awarded a Fellowship from the prestigious Bogliasco Foundation in Italy. Throughout her celebrated career, Middleton has held ten solo exhibitions and participated in more than thirty Art Fairs and group shows internationally. Anne Middleton currently lives in the City of Port Phillip and is a dedicated full-time artist.



Through an extraordinarily refined and perfected painting technique, Anne Middleton explores our natural world in sublime detail. Middleton examines the environment and our connectedness to it. Unapologetically beautiful, her paintings immerse the viewer in a utopian realm, minutely observed, with subjects as disarmingly familiar as a garden wren or a blossom in spring.

Middleton's deeply personal and poetic aesthetic has been developed over nearly thirty years of consistent dedication to her chosen medium of oil painting. Exhaustively accomplished to the most notable and exacting standards, her paintings are rendered with the empirical precision and fastidious accuracy of scientific illustration. Middleton's paintings are equally placed within the domains of botanical science and those of the art museum.

Middleton's lineage as a painter draws richly from the classical, romantic and baroque artistic traditions that flourished in Europe during the 17th and 18th Centuries. Utilizing these techniques, she transforms her acute observations within each canvas to create epic testimonies to the wonders of nature. Her work invites us to view the familiar yet often over-looked, afresh.

Middleton has significantly contributed to the contemporary artistic community both within Australia and on the international stage in Hong Kong, Italy and the UK. In 2004, she was the first Australian to be awarded a Fellowship from the prestigious Bogliasco Foundation in Italy. Throughout her celebrated career, Middleton has held ten solo exhibitions and participated in more than thirty Art Fairs and group shows internationally. Anne Middleton currently lives in the City of Port Phillip and is a dedicated full-time artist.





This World is a Dewdrop World, &
Garlic. Guard thy Heart, 2014
Diptych, oil on linen, 192 x 126 cm



Renaissance Tulip VI, 2008
oil on linen, 66 x 71 cm



Cactus, 2014
oil on linen, 66 x 71 cm



Jade Bird of Dreams and Tranquility, 2015
oil on linen, 192 x 252 cm





Malurus cyaneus. Divine Augur and Bird of Bright Cheer, 2017
oil on linen, 192 x 252 cm (detail on left)



Rosa, 2014
oil on linen, 66 x 71 cm

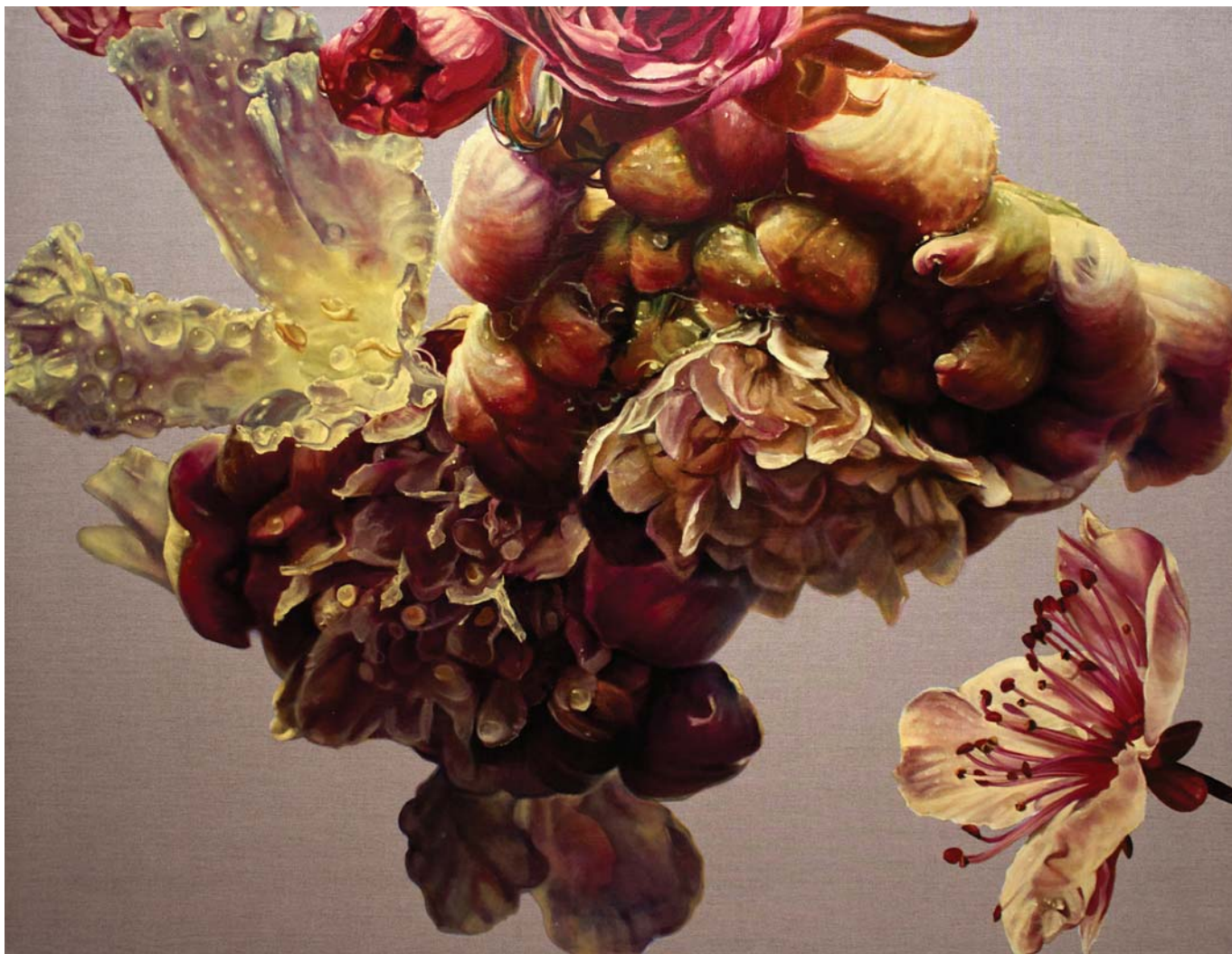


Look to my Petals, 2014
oil on linen, 96 x 126 cm





Of Love, Fidelity, and the Colour Purple &
The Gentle Messenger - Pied Imperial Pigeon, 2015
Diptych, oil on linen, 96 x 252 cm



Scabiosa columbaria (Pink Mist), 2011
oil on linen, 96 x 126 cm



Stella diabolus (Star of Lucifer), 2011
oil on linen, 96 x 126 cm



Gates of Paradise installation
oil on linen, 288 x 504 cm



Malum rubens, 2012
oil on linen, 96 x 126 cm



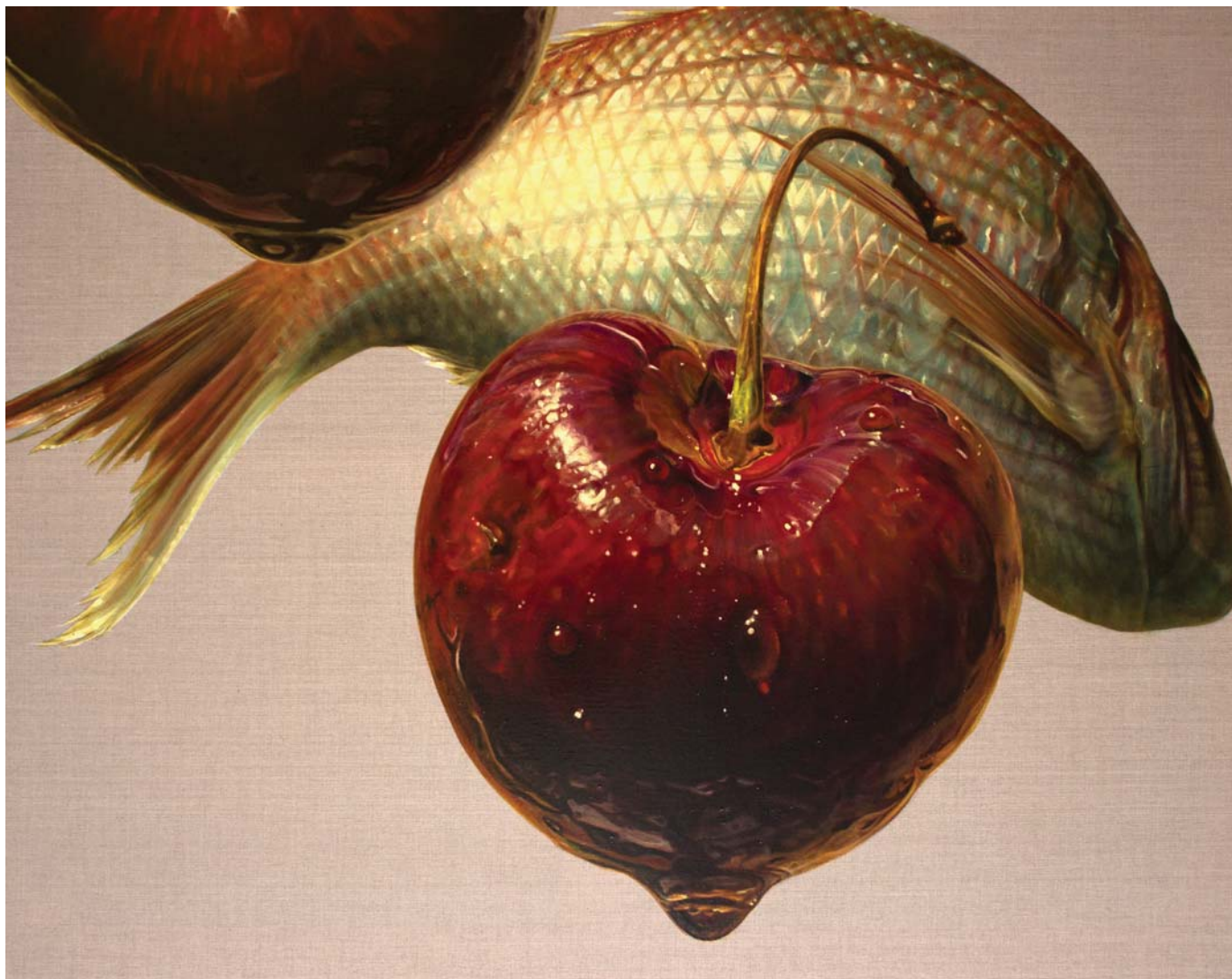
Prunus persica, 2012
oil on linen, 96 x 126 cm



Prunus avium, 2012
oil on linen, 96 x 126 cm



Tulipa liliacea, 2012
oil on linen, 96 x 126 cm



Fish of Good Fortune, 2012
oil on linen, 96 x 126 cm



Plum, 2010
oil on linen, 96 x 126 cm



Passiflora edulis, 2010
oil on linen, 96 x 126 cm



The Death Bed, 2010
oil on linen, 96 x 126 cm



Treasureflower, 2013
oil on linen, 96 x 126 cm



Sardine. The Burial of Winter, 2013
oil on linen, 96 x 126 cm





Solo Exhibitions

- 2017 The Gallery, St Kilda Town Hall, Melbourne - *Gates of Paradise*
- 2015 Rebecca Hossack Art Gallery, London - *Gates of Paradise*
- 2013 Rebecca Hossack Art Gallery, London - *Gates of Paradise*
- 2008 Indabella, Pokfulam, Hong Kong - *Flores*
- 2005 Albert Park Gallery, Melbourne - *Artist in Study*
- 2001 Fenix Restaurant, Richmond - *Nourish*
- 2001 Hotel Sofitel Melbourne - *Fronds*
- 2000 Hotel Sofitel Melbourne Food & Wine Festival - *Nourish*
- 1999 Hotel Sofitel Melbourne - *Nourish*
- 1998 Span Galleries Melbourne - *Creases*

Group Exhibitions

- 2016 The Gallery, St Kilda Town Hall, Melbourne - *The Botanic Garden*
- 2006 Albert Park Gallery - *Oceania Australis*
- 2006 Albert Park Gallery - *Mother, Father, Daughter*
- 2006 The Hon. John Thwaites Offices, Treasury Place, East Melbourne, Southside Arts
- 2005 Toyota Community Spirit Gallery - *Neomillennium*
- 2005 Sofitel Melbourne - *Art & Soul*
- 2004 Toyota Community Spirit Gallery - *Bridge*
- 2003 Albert Park Gallery - *Lush*
- 2002 Charles Nodrum Gallery - *The Painted Fold*
- 1999 Old Treasury, Melbourne - *The Deep South*
- 1998 Aboriginal Art Galleries of Australia, Melbourne - *Fuse*
- 1995 Palazzo Massi, Arezzo, Italy
- 1989 Massoni Gallery, Melbourne Australia
- 1898 Women's Gallery, Melbourne Australia

Art Fairs

- 2015 Art Stage Singapore
- 2015 Sydney Contemporary Art Fair
- 2011 - 2014 Art Fairs in Singapore, Toronto, London, Hamptons, New York & Melbourne

Residences

Bogliasco Foundation Fellowship, Genoa Italy, 2004

Public Collections

Tuscan Region Municipal Collection, Italy
Coburg Peninsula Sanctuary Board, Gurig National Park, Arnhem Land, Australia
Il Laboratorio per Affresco di Vainella Prato, Italy

the Gallery

ST KILDA TOWN HALL

www.annemiddleton.com.au

www.georgiebconsulting.com

