

# *Melbourne Places*

(<http://www.melbourneplaces.com/>)

APRIL 3, 2017

## ANNE MIDDLETON GATES OF PARADISE, THE GALLERY, ST KILDA TOWN HALL



**T**his gallery which is part of the Port Phillip Town Hall and council offices is a source of continuing fascination and stimulus to locals. There is always something interesting and different to see.

The current exhibition of paintings by Anne Middleton is a stand out. It is called Gates of Paradise. Walk through the door and get blown away. You'll find yourself in a paradise of flowers and birds.



<http://www.melbourneplaces.com/wp-content/uploads/2017/04/flowers-and-pigeon.jpg>

These are big oil paintings on linen and they take us to lush gardens of flowers, birds and insects. Gardens you would hope to find in paradise. I loved them.



<http://www.melbourneplaces.com/wp-content/uploads/2017/04/Rose.jpg>



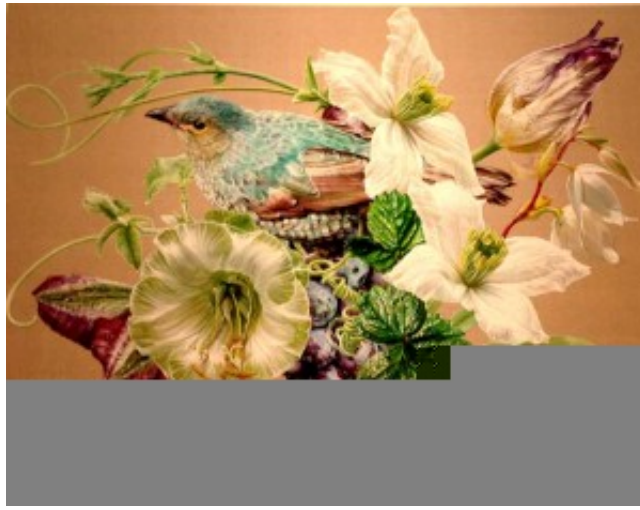
<http://www.melbourneplaces.com/wp-content/uploads/2017/04/Flowers-and-bubbles.jpg>

They are happy paintings in beautiful colours and showing minute details of the flowers and birds. Take a look at the Iris with a bumble bee cuddling up to it.



<http://www.melbourneplaces.com/wp-content/uploads/2017/04/Bird-and-pink-flowers.jpg>

Post cards of some of the paintings are on sale so you can take a memory of these stunning paintings home with you. The paintings are for sale so if you want to you can bypass the postcards and take a painting home instead.



<http://www.melbourneplaces.com/wp-content/uploads/2017/04/Bird-and-flowers.jpg>

My photos haven't done justice to the splendor of the painting. You will have to check them out for yourself.

**Anne Middleton's exhibition runs until April 13th.**

**Where:-**

The Gallery, St Kilda Town Hall  
99a Carlisle Street  
St Kilda 3182

**Open:-**

8.30am to 5.00pm

**Trams:-**

16 & 3